

© Weldon Owen PTY Ltd

### Early Earth

Here is a view of the early Earth, enduring the bombardment of planetesimals that rained down for the first several hundred million years of our planet's existence

M	T	W	T	F	S	S
28	29	30	31	1	2	3
4	5	6	7	8	9	10
11	12	13	14	15	16	17
18	19	20	21	22	23	24
25	26	27	28	29	30	31

### JANUARY 2010

© Mark A. Garlick / markgarlick.com



### Sister Earth

This is an impression of the extrasolar planet Gliese 581c. It resembles the Earth but it is five times its mass. I show the planet with an imagined system of rings, as seen from one of the world's hypothetical satellites.

M	1	8	15	22	1
T	2	9	16	23	2
W	3	10	17	24	3
T	4	11	18	25	4
F	5	12	19	26	5
S	6	13	20	27	6
S	7	14	21	28	7

### FEBRUARY 2010

© Mark A. Garlick / markgarlick.com



Lunar Naissance

The young planet Earth (left) is still surrounded by a ring of debris from which the Moon (right) has recently formed. The debris is the result of the Earth having been hit by a large protoplanet.

M	T	W	T	F	S	S
1	2	3	4	5	6	7
8	9	10	11	12	13	14
15	16	17	18	19	20	21
22	23	24	25	26	27	28
29	30	31	1	2	3	4

MARCH 2010

© Mark A. Garlick / markgarlick.com



Impact Imminent

High above the Earth, an asteroid a few kilometres across enters our planet's atmosphere at a speed of several kilometres per second. It will impact in mere seconds.

M	T	W	T	F	S	S
29	30	31	1	2	3	4
5	6	7	8	9	10	11
12	13	14	15	16	17	18
19	20	21	22	23	24	25
26	27	28	29	30	1	2

APRIL 2010

© Mark A. Garlick / markgarlick.com



### The Solar System

The Sun, the eight major planets and the asteroids that make up the Solar System are seen here in a conceptual image. The sizes of the planets and their orbits are, of course, not to scale.

M	T	W	T	F	S	S
26	27	28	29	30	1	2
3	4	5	6	7	8	9
10	11	12	13	14	15	16
17	18	19	20	21	22	23
24	25	26	27	28	29	30
31	1	2	3	4	5	6

## MAY 2010

© Mark A. Garlick / markgarlick.com



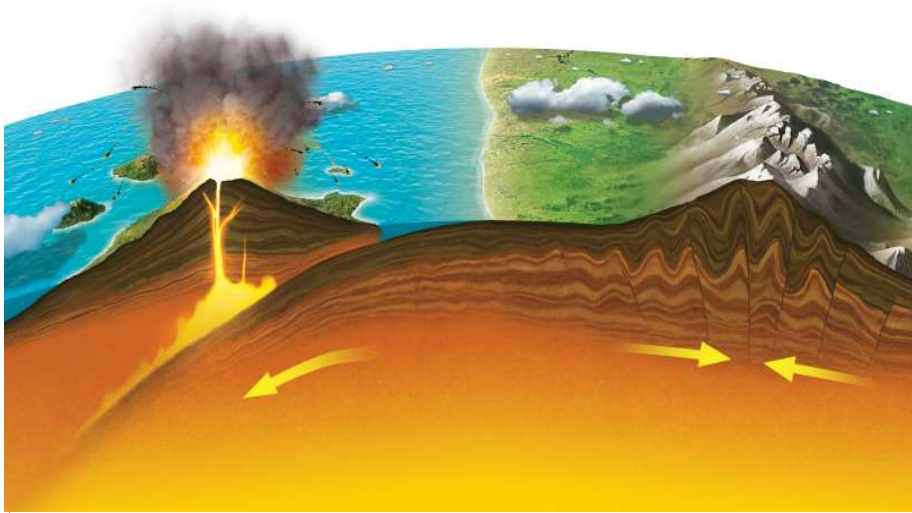
### The Waste Lands

I am a big fan of Stephen King's The Dark Tower novels, which run to seven volumes. I imagine here a scene from the third book in the series, entitled The Waste Lands.

M	T	W	T	F	S	S
31	1	2	3	4	5	6
7	8	9	10	11	12	13
14	15	16	17	18	19	20
21	22	23	24	25	26	27
28	29	30	1	2	3	4

## JUNE 2010

© Mark A. Garlick / markgarlick.com



Inside the Earth

This was requested for a children's book about the interior of the Earth. In the book, the interior sections are printed on acetate sheets that can be lifted away.

M	T	W	T	F	S	S
28	29	30	1	2	3	4
5	6	7	8	9	10	11
12	13	14	15	16	17	18
19	20	21	22	23	24	25
26	27	28	29	30	31	1

JULY 2010

© Mark A. Garlick / markgarlick.com



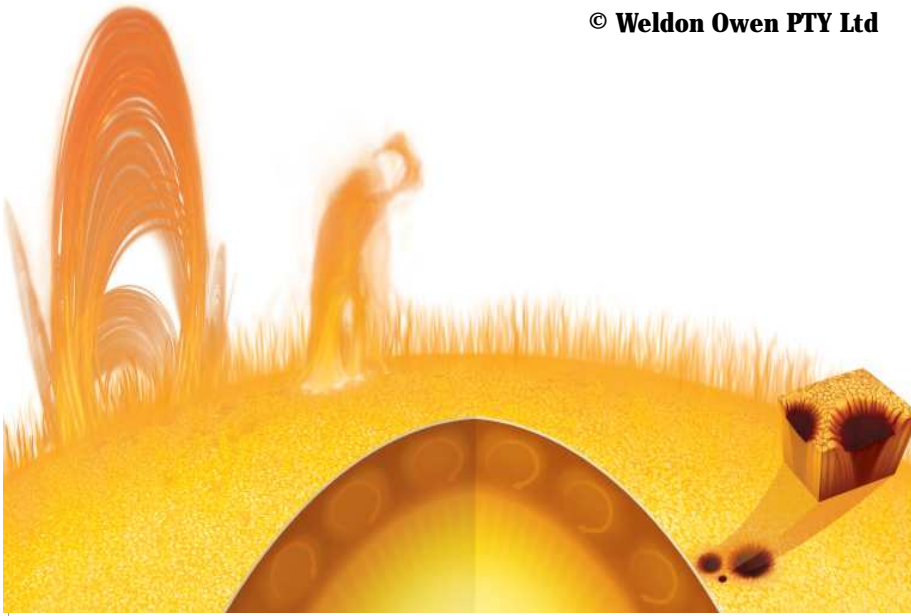
Near-Earth Asteroid

The near-Earth asteroids are those whose orbits cross our planet's. They pose the greatest threat to the Earth and its fragile biosphere. They have hit us in the past, and certainly will do so again.

M	T	W	T	F	S	S
26	27	28	29	30	31	1
2	3	4	5	6	7	8
9	10	11	12	13	14	15
16	17	18	19	20	21	22
23	24	25	26	27	28	29
30	31	1	2	3	4	5

AUGUST 2010

© Mark A. Garlick / markgarlick.com



Inside the Sun

Another piece commissioned for a children's book, this time about the weather. It shows the structure of the Sun, the driving force behind our meteorological systems.

M	T	W	T	F	S	S
30	31	1	2	3	4	5
6	7	8	9	10	11	12
13	14	15	16	17	18	19
20	21	22	23	24	25	26
27	28	29	30	1	2	3

SEPTEMBER 2010

© Mark A. Garlick / markgarlick.com



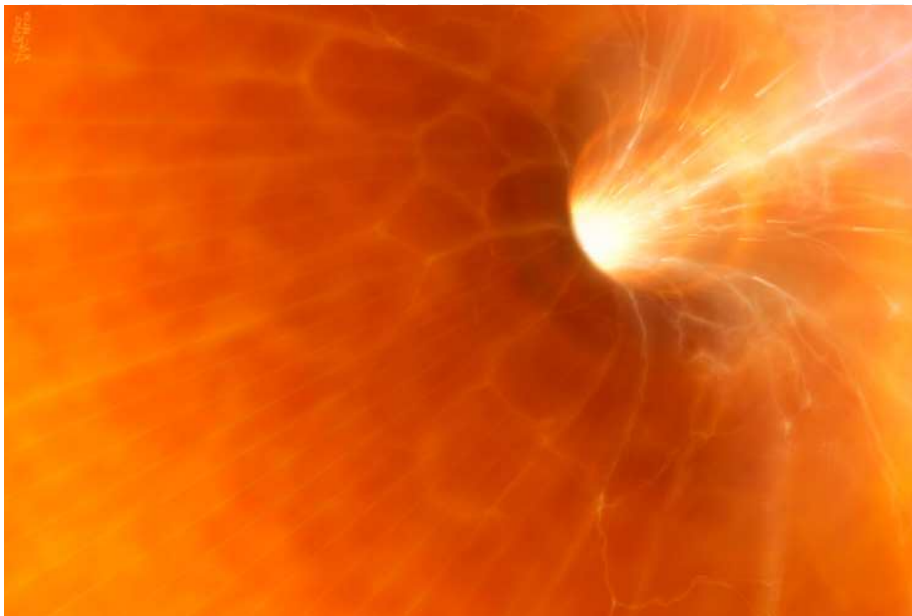
Within the Realm of a Dying Sun

Six billion years from now, our Sun will become a red giant. The innermost planets, Mercury and Venus, will be completely engulfed, but the Earth's fate remains unclear.

M	T	W	T	F	S	S
27	28	29	30	1	2	3
4	5	6	7	8	9	10
11	12	13	14	15	16	17
18	19	20	21	22	23	24
25	26	27	28	29	30	31

OCTOBER 2010

© Mark A. Garlick / markgarlick.com



### Wormhole Transit

A conceptual illustration of a wormhole, hypothetical tunnels through spacetime. They might permit effective speeds which are faster than light – even time travel.

M	T	W	T	F	S	S
1	2	3	4	5	6	7
8	9	10	11	12	13	14
15	16	17	18	19	20	21
22	23	24	25	26	27	28
29	30	1	2	3	4	5

## NOVEMBER 2010

© Mark A. Garlick / markgarlick.com



### End of an Era

A vast asteroid, 7 miles (10 km) across, slams into the Earth at a speed measured in kilometres per second. An event such as this ended the reign of the dinosaurs and other species some 65 million years ago.

M	29	6	13	20	27
T	30	7	14	21	28
W	1	8	15	22	29
T	2	9	16	23	30
F	3	10	17	24	31
S	4	11	18	25	1
S	5	12	19	26	2

## DECEMBER 2010

© Mark A. Garlick / markgarlick.com